

# *Cal Facts*

Excellence in undergraduate education

World-class research

A global university





## Nobel pursuits



**Twenty-two members of the Berkeley faculty have won Nobel Prizes**, including seven current faculty members. Additionally, 29 Berkeley alumni have won the award — five of whom have served on the faculty.

**H**ome to more than 27,000 undergraduates and more than 10,000 graduate students, Berkeley is internationally renowned for excellence and pioneering achievements across all disciplines. At the heart of its preeminence are its 1,620 full-time and 616 part-time faculty members. Dispersed among more than 170 academic departments and programs, and 80 research units, Berkeley's professors are highly distinguished researchers and scholars — and leading experts in their fields.

# A UNIVERSITY OF GREAT DISTINCTION

### *Berkeley faculty honors*

#### AMERICAN ACADEMY OF ARTS AND SCIENCES

HARVARD 452  
STANFORD 255  
**BERKELEY 230**  
MIT 221

#### NATIONAL MEDAL OF SCIENCE

STANFORD 19  
**BERKELEY 15**  
MIT 11  
HARVARD 10

#### NATIONAL ACADEMY OF ENGINEERING

MIT 117  
**BERKELEY 97**  
STANFORD 97  
HARVARD 23

#### NATIONAL ACADEMY OF SCIENCES

HARVARD 173  
STANFORD 142  
**BERKELEY 139**  
MIT 116

#### AMERICAN PHILOSOPHICAL SOCIETY

HARVARD 102  
PRINCETON 69  
STANFORD 45  
**BERKELEY 40**

### *Best global universities for 2014*

#### US NEWS & WORLD REPORT

1. HARVARD
2. MIT
- 3. BERKELEY**
4. STANFORD
5. OXFORD

### *Academic ranking of world universities for 2014*

#### SHANGHAI JIAO TONG UNIVERSITY

1. HARVARD
2. STANFORD
3. MIT
- 4. BERKELEY**
5. CAMBRIDGE

# WORLD-CLASS TEACHING AND RESEARCH

**B**erkeley's professors educate, challenge, mentor, and inspire tomorrow's leaders in academia, arts and culture, business, government, and the professions.

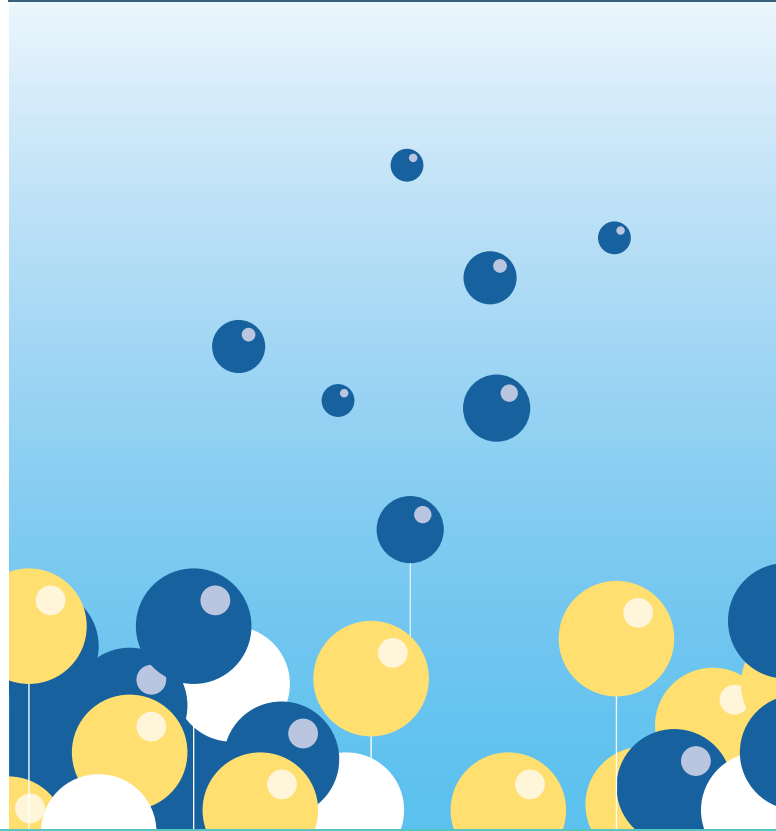
- The university offers **more than 10,000 undergraduate and graduate courses in approximately 300 degree programs**, and typically produces more Ph.D.s than any other U.S. research university.
- Cal offers **more than 50 foreign languages**, including Dutch, Vietnamese, and Wolof.
- **53% of Berkeley undergraduates** responding to a 2014 student survey assisted faculty in research or had completed at least one student research course.

## *Library excellence*

More than **11 million** volumes

More than **400 languages** represented in the collections

More than **85,000 active cardholders**



## *Drawing brilliant young faculty*

Berkeley is committed to hiring the very best young faculty. That commitment is reflected in the university's high number of junior faculty who have received coveted research fellowships from the Alfred P. Sloan Foundation.

### SLOAN RESEARCH FELLOWS AWARDS SINCE 2000

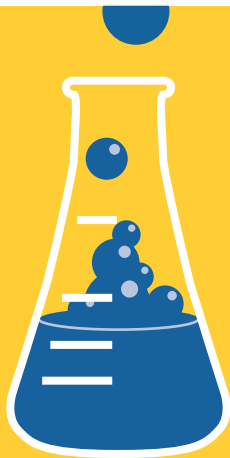
MIT 94

**BERKELEY 88**

HARVARD 78

STANFORD 73

PRINCETON 66



## A RESEARCH POWERHOUSE

Berkeley's research strength includes expertise in addressing pressing global challenges in the areas of health, energy, and the environment.

- In 2014, *US News & World Report* ranked six Berkeley graduate programs —chemistry, computer science, English, history, public policy, and sociology — No. 1 in the nation.
- 1,298 National Science Foundation graduate research fellowships were awarded to Berkeley students from 2004 to 2013, more than any other school.

# INNOVATION FOR THE GREATER GOOD

## *A legacy for advances*

Berkeley's vibrant entrepreneurial ecosystem extends across virtually every corner of campus and the broad Cal community — from middle and high school students involved with the Young Entrepreneurs at Haas through the energetic undergraduate and graduate student ranks, to world-class postdocs and faculty, and thousands of alumni around the world.

## *Commitment to public service*

Founded by students in 1967 as the Community Projects Office and known until 2013 as Cal Corps, the UC Berkeley Public Service Center partners with the community, student leaders, and faculty to engage **more than 5,000 students** each year as volunteers, and through jobs, internships, and courses. Last year through the center, Berkeley students provided **290,000 hours of service** to off-campus communities.

## *A leader in sustainability*

- **75%** of students commute carbon-free by walking or biking
- **\$1.8 million** in student-fee funding for **131 sustainability projects** in seven years
- **29%** of undergraduates took at least one course focused on sustainability in 2013–14

**B**erkeley is well known for its tradition of public service, which plays a key role in the university's teaching and research. Outside of the classroom:

- **12,087 graduate and undergraduate students** served more than 300 community-based organizations, government offices, and schools in 2013–14.
- Berkeley continues to be the only school in the country to have produced **more than 3,500 Peace Corps volunteers** since that organization's inception in 1961.



**COMING SOON**  
**A NEW**  
**RESEARCH**  
**HUB**

The future of great research universities lies in global reach and connectivity.

To this end, Berkeley is developing the **Berkeley Global Campus at Richmond Bay**, a 130-acre facility that will serve as a hub for a consortium of world-class international universities and provide a state-of-the-art research and educational facility for the brightest minds from across the world. To learn more, visit [bgc.berkeley.edu](http://bgc.berkeley.edu).

## Financial support for students

62%

of all undergraduates receive some form of financial aid

34%

of all undergraduates are eligible for Pell Grants

\$35 million

in privately funded undergraduate scholarships were offered in 2013–14, supporting 5,100 recipients

### *Help for middle-class students*

With the Middle Class Action Plan (MCAP), Berkeley became the first public university to offer financial help for middle-class students — capping contributions from Cal families earning \$80,000 to \$150,000 annually at 15 percent of their total income. Nearly 4,000 students received support through MCAP in 2014–15.

### *Leaving Cal with less debt*

On average, Berkeley undergraduates graduate with less debt than their peers at institutions in California schools and across the nation.

#### AVERAGE DEBT AT GRADUATION

BERKELEY	CALIFORNIA	UNITED STATES
\$17,468	\$20,340	\$28,400

## KEEPING EDUCATIONAL OPPORTUNITY ALIVE

Scholarship support from private donors enables Cal to fulfill its public mission to accept students based on their ability to achieve, not on their capacity to pay. About 9,100 undergraduates come from low-income families — nearly as many as the number of Pell Grant recipients at all of the Ivy League schools combined.

### *Public preeminence*

In 2015, Berkeley was the top-ranked public institution in the Best Colleges rankings compiled by *US News & World Report*. Additionally, *Kiplinger's* ranked Berkeley among its top 10 best values in public colleges.

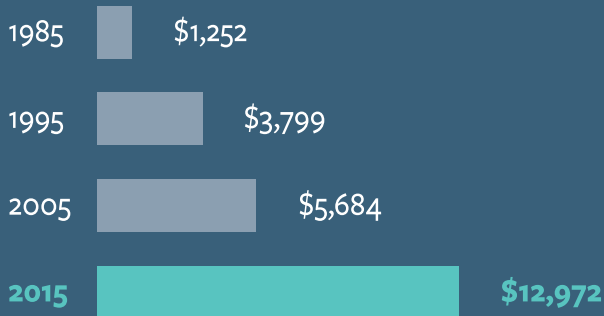
### *New student facts*

- \$34,358 yearly tuition and expenses (including optional health insurance) for in-state students living on campus
- 18% of applicants admitted
- 69% of freshmen from California
- 17% of freshmen from families in which neither parent has a four-year college degree
- 32% of freshmen earned a perfect 4.0 high school GPA



# THE CHALLENGE OF STATE FUNDING

## Tuition for undergraduate residents



### UNDERGRADUATE BUDGET 2014-15\*

	RESIDENTS	NONRESIDENTS
Tuition	\$12,972	\$35,850
Room/board	\$14,414	\$14,414
Other expenses	\$4,782	\$4,782
<b>Total budget</b>	<b>\$32,168</b>	<b>\$55,046</b>

### GRADUATE BUDGET 2014-15\*

	RESIDENTS	NONRESIDENTS
Tuition	\$12,972	\$28,074
Room/board	\$11,946	\$11,946
Other expenses	\$11,868	\$11,868
<b>Total budget</b>	<b>\$36,786</b>	<b>\$51,888</b>

\* Tuition figures are accurate as of March 2015. Graduate tuition varies in the professional schools.

State support for Berkeley has plummeted in recent years, placing California's world-renowned system of public higher education at risk. The State of California provides only about 12 percent of Berkeley's \$2.3 billion annual budget — with the remainder coming from tuition, research funding, and philanthropy.

Thirty years ago, the state provided more than 50 percent of Berkeley's funding.



**ACCESS**  
**&**  
**EXCELLENCE**

**Roughly one-quarter of Cal's undergraduates are out-of-state and international students**

— and the additional nonresident tuition that they pay helps keep Berkeley affordable for lower-income California students.

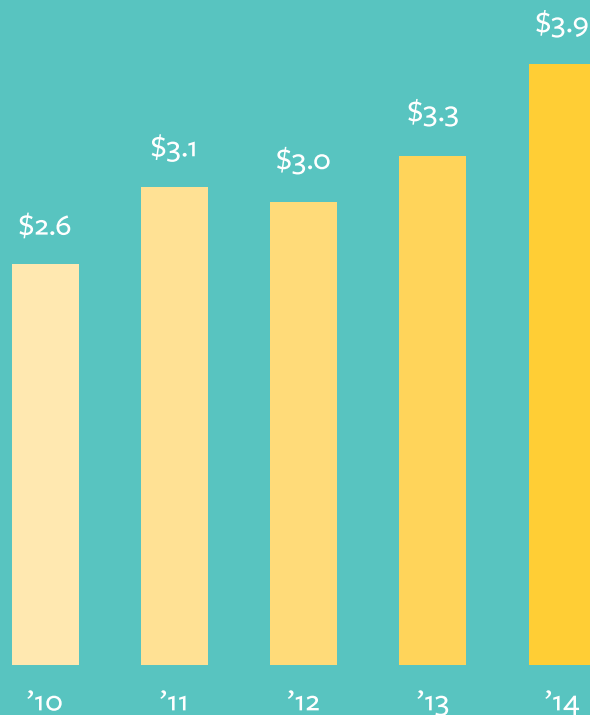
## One day, making a big impact

On November 20, 2014, Berkeley held its first-ever 24-hour campuswide fundraising blitz — **the Big Give**. Fueled by a variety of contests, widespread social media participation, and a collective desire to keep Berkeley the No. 1 public university in the world, donors made **7,336 gifts** totaling **\$5,309,418**. This global outpouring of support touched every Berkeley school and college, and programs as diverse as our great university.

# A PUBLIC MISSION MADE POSSIBLE BY PRIVATE SUPPORT

**P**ublic-private partnerships between the university and individuals, businesses, and other organizations are essential to preserve Berkeley's excellence in education, research, and public service. Nearly 62,000 donors — including alumni, parents, corporations, and foundations — gave more than \$366 million in private gifts and pledges in the 2013–14 fiscal year.

## Market value of Berkeley's endowment (in billions)



## Berkeley's endowment: a lasting legacy

The university's \$3.9 billion endowment is the solid foundation upon which Berkeley's excellence is built. A long-term, reliable source of funding, the endowment allows us to realize our mission of teaching, research, and public service for generations to come — and to see a clearer picture of what lies ahead for Cal.

Berkeley's endowment generated **\$111 million** in payout to the campus in 2013–14.

# ENGAGING ALUMNI AND PARENTS

484,584

living Berkeley alumni

105,000

Cal Alumni Association  
members

46,534

alumni gave to  
Berkeley in 2013–14

25,000

Cal Parents families

## Athletic achievements

30

men's and  
women's teams

More than

850

student-athletes

87

national titles  
all-time in

15

different sports,  
as well as

274

individual titles

19

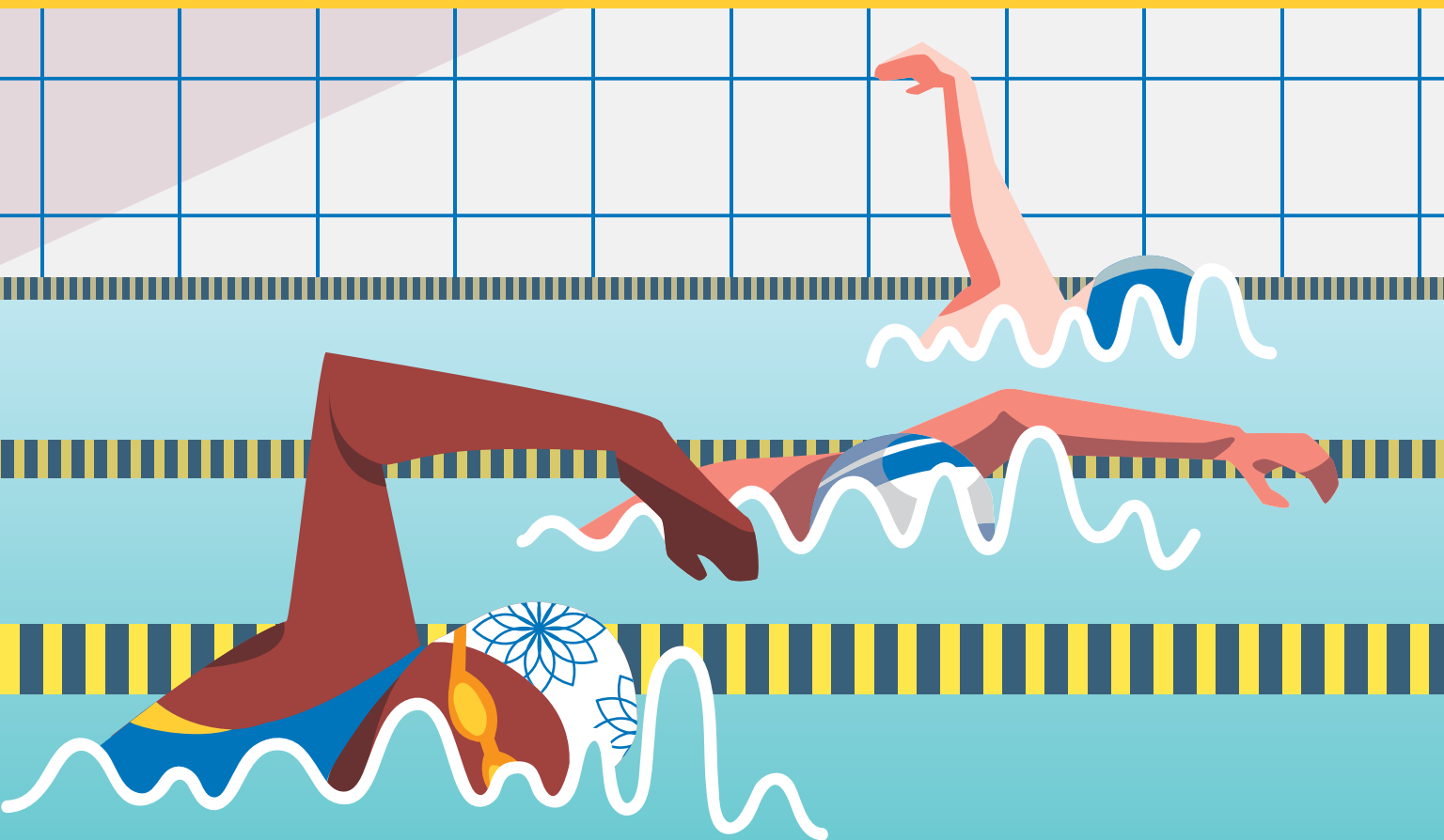
current and former  
Cal athletes earned

23

medals, including

15

gold, at the 2012  
Summer Olympics  
in London



# CONNECTIONS AND SUPPORT

## *News and events*

### **The Promise of Berkeley Magazine** [promise.berkeley.edu](http://promise.berkeley.edu)

The online edition of the campus magazine.

### **Berkeley Online** [berkeleyonline.berkeley.edu](http://berkeleyonline.berkeley.edu)

Berkeley's monthly email newsletter.

### **NewsCenter** [newscenter.berkeley.edu](http://newscenter.berkeley.edu)

Daily news and stories from Berkeley.

### **Events Calendar** [events.berkeley.edu](http://events.berkeley.edu)

Lectures, sports, performances, films, and other public events.

### **Podcasts/Webcasts** [webcast.berkeley.edu](http://webcast.berkeley.edu)

Download the latest courses or events featuring prominent speakers.

### **BerkeleyX** [www.edx.org/school/uc-berkeleyx](http://www.edx.org/school/uc-berkeleyx)

Tuition-free, not-for-credit online courses taught by Berkeley faculty.

### **Homecoming** [homecoming.berkeley.edu](http://homecoming.berkeley.edu)

Registration, schedule, and reunion information for the annual event.

## *Social media*

### **@cal Alumni Network** [cal.berkeley.edu](http://cal.berkeley.edu)

Create a free email forwarding address, search the alumni directory, and network with alums and students.

### **Twitter** [twitter.com/cal](http://twitter.com/cal)

Links to news, events, and more, in 140 or fewer characters.

### **Google+** [plus.google.com/+Cal](http://plus.google.com/+Cal)

Check out Cal's Circles, Events, Hangouts, and more.

### **Instagram** [instagram.com/ucberkeley](http://instagram.com/ucberkeley)

Campus photographs shot using mobile phones.

### **Facebook** [facebook.com/UCBerkeley](http://facebook.com/UCBerkeley)

Share links, photos, videos, and messages on all things Cal.

### **Facebook (Cal Alumni Association)** [facebook.com/CalAlumni](http://facebook.com/CalAlumni)

The official Facebook page of CAA.

### **Pinterest** [pinterest.com/uc\\_berkeley](http://pinterest.com/uc_berkeley)

View, collect, and share images of Berkeley, its history, and more.

## *Alumni, parents, and friends*

### **Give to Berkeley** [give.berkeley.edu](http://give.berkeley.edu)

Choose from hundreds of online giving funds that support students, faculty, research, and more.

### **Cal Alumni Association** [alumni.berkeley.edu](http://alumni.berkeley.edu)

Connect to other alumni and your alma mater through alumni groups, *California* magazine, educational travel opportunities, career services, and other programs.

### **Berkeley Wall of Fame** [berkeleywalloffame.org](http://berkeleywalloffame.org)

Celebrate alumni who are changing their fields, communities, and the world at large.

### **Cal Parents** [calparents.berkeley.edu](http://calparents.berkeley.edu)

Discover the services, information, events, and one-on-one help that Berkeley offers you and your student.

### **International Clubs** [international.berkeley.edu](http://international.berkeley.edu)

Connect with alumni, parents, and friends around the world.

### **Charter Hill Society** [charterhill.berkeley.edu](http://charterhill.berkeley.edu)

Campus benefits for donors who give \$1,000 or more annually.

### **Cal Advocacy** [uc4ca.org](http://uc4ca.org)

Engages alumni and friends in conveying support for the university to lawmakers and the governor.

### **Cal Athletics** [calbears.com](http://calbears.com)

Comprehensive coverage including schedules and ticket information.

### **Visitor Services** [visitors.berkeley.edu](http://visitors.berkeley.edu)

Extensive details on the campus, events, and campus tours.

### **UC Berkeley Foundation** [foundation.berkeley.edu](http://foundation.berkeley.edu)

Advisory group for the Chancellor and the campus as a whole.

### **Entrepreneurs and Company Founders** [founders.berkeley.edu](http://founders.berkeley.edu)

For-profit and nonprofit organizations founded by alumni, faculty, and staff.

## **UNIVERSITY OF CALIFORNIA, BERKELEY**

University Relations

2080 Addison Street #4200 • Berkeley, CA 94720–4200

510.642.1212 • [ureditor@berkeley.edu](mailto:ureditor@berkeley.edu)

Information current as of March 2015

